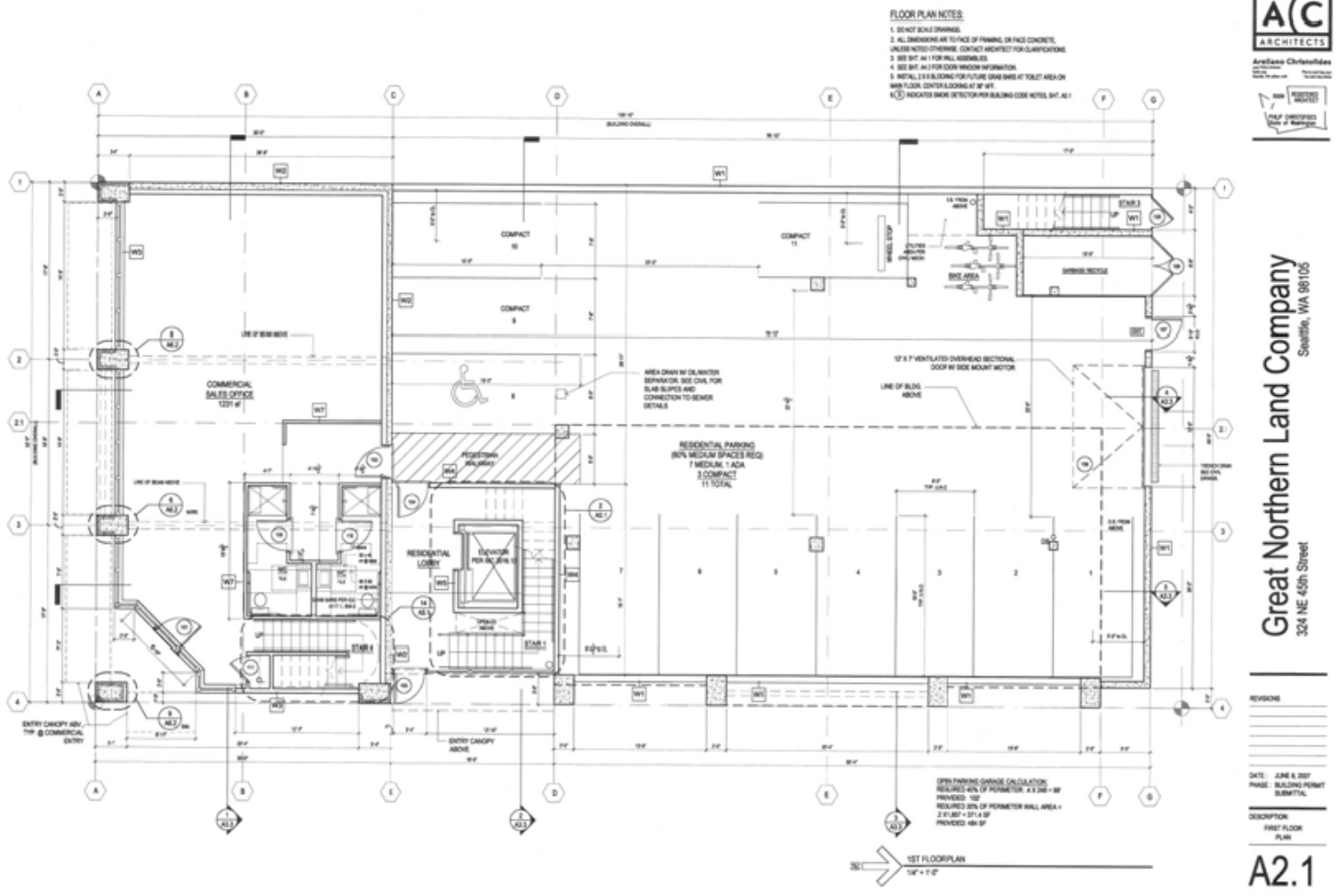


# NE 45TH STREET DEVELOPMENT SITE

316 45TH STREET, SEATTLE, WA

## MUP PLANS—1ST FLOOR



Arulano Christofides  
 Principal Architect



Great Northern Land Company  
 Seattle, WA 98105  
 3204 NE 45th Street

### FOR MORE INFORMATION CONTACT

**BILLY POLL, CCIM**  
 Direct: 425.974.4232  
 Cell: 206-853-8556  
 bpoll@mpiha.com

**DEAN ALTARAS, CCIM**  
 Direct: 425.974.4232  
 Cell: 425-417-7158  
 daltaras@mpiha.com

### CO-LISTED WITH

**BENJAMIN CHOTZEN**  
 GERARD, BEATTIE & KNAPP  
 Direct: 206-322-8940  
 Cell: 206-948-3208

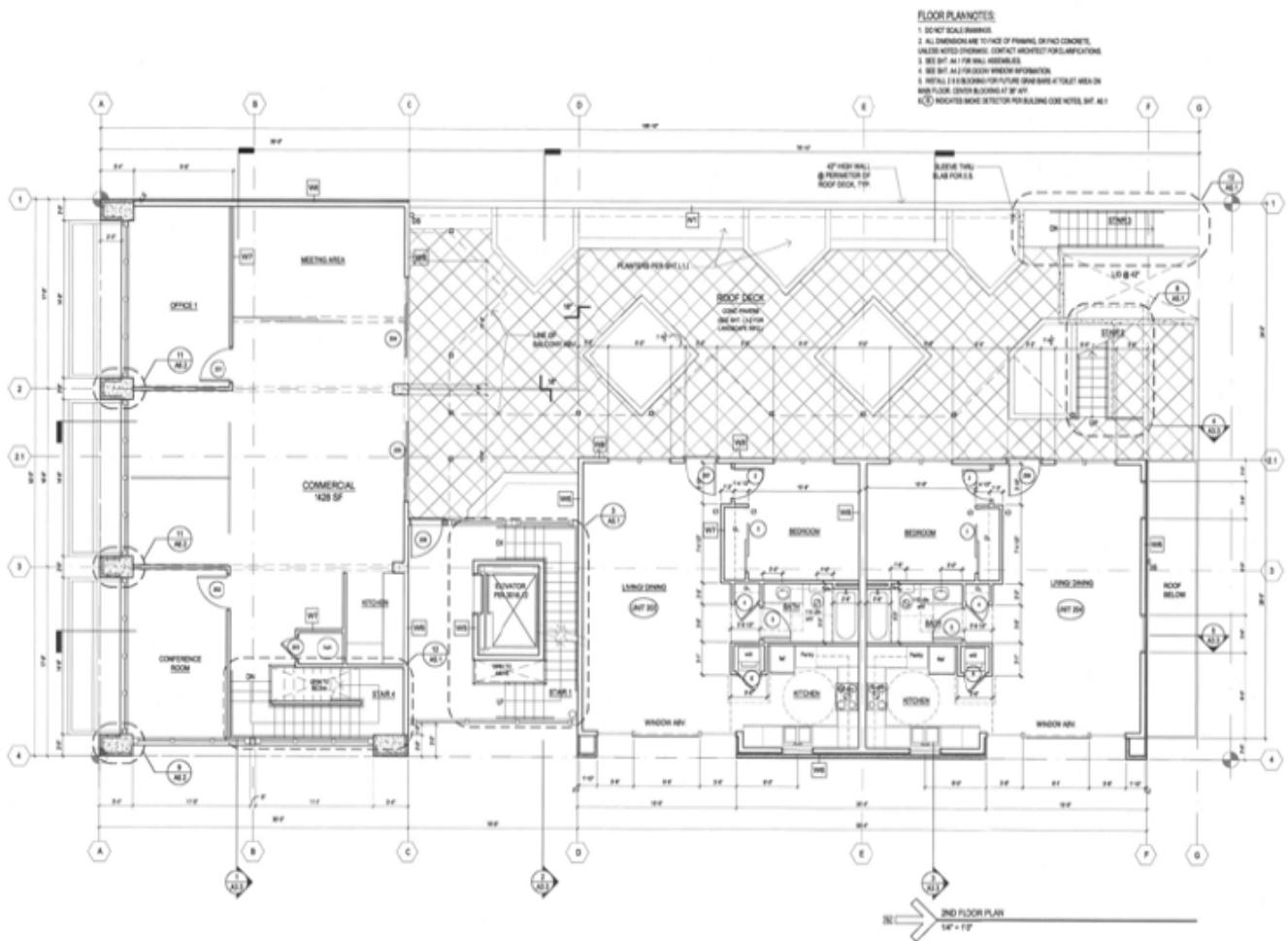
**MORRIS PIHA REAL ESTATE SERVICES**  
 14100 SE 36TH STREET, STE 200  
 BELLEVUE, WA 98006  
 425-643-8400  
 WWW.MPIHA.COM



# NE 45TH STREET DEVELOPMENT SITE

316 45TH STREET, SEATTLE, WA

## MUP PLANS—2ND FLOOR



Autissa Christides  
ARCHITECT  
1000 1ST AVENUE  
SEATTLE, WA 98101  
TEL: 206.461.1111  
WWW.ACARCHITECTS.COM

Great Northern Land Company  
Seattle, WA 98105  
324 NE 45th Street

REVISIONS  
DATE: APRIL 8, 2017  
PHASE: BUILDING PERMIT SUBMITTAL

DESCRIPTION: 2ND FLOOR PLAN

A2.2

### FOR MORE INFORMATION CONTACT

**BILLY POLL, CCIM**  
Direct: 425.974.4232  
Cell: 206-853-8556  
bpoll@mpiha.com

**DEAN ALTARAS, CCIM**  
Direct: 425.974.4232  
Cell: 425-417-7158  
daltaras@mpiha.com

### CO-LISTED WITH

**BENJAMIN CHOTZEN**  
GERARD, BEATTIE & KNAPP  
Direct: 206-322-8940  
Cell: 206-948-3208

**MORRIS PIHA REAL ESTATE SERVICES**  
14100 SE 36TH STREET, STE 200  
BELLEVUE, WA 98006  
425-643-8400

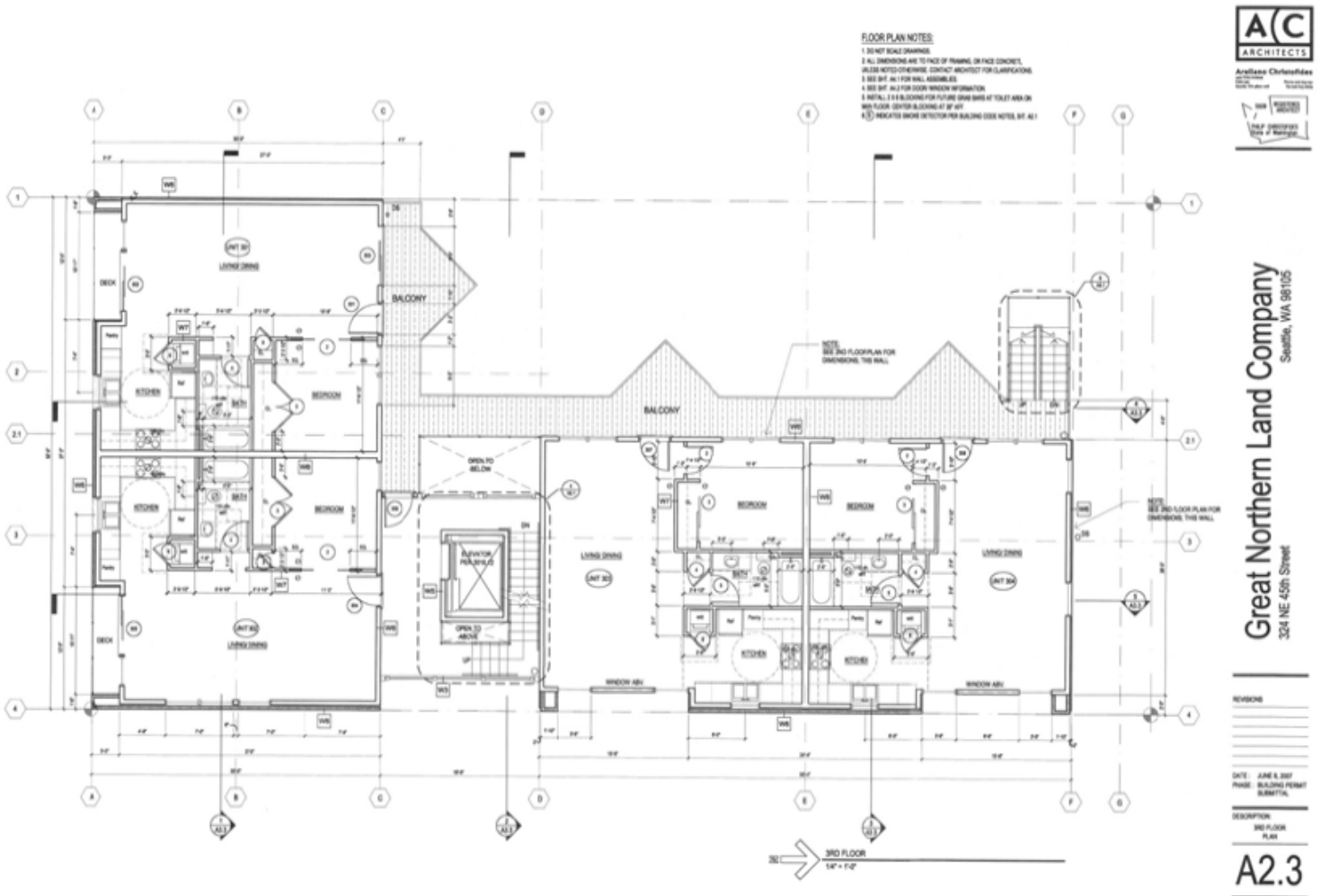
WWW.MPIHA.COM



# NE 45TH STREET DEVELOPMENT SITE

316 45TH STREET, SEATTLE, WA

## MUP PLANS—3RD FLOOR



**Great Northern Land Company**  
 Seattle, WA 98105  
 324 NE 45th Street

### FOR MORE INFORMATION CONTACT

**BILLY POLL, CCIM**  
 Direct: 425.974.4232  
 Cell: 206-853-8556  
 bpoll@mpiha.com

**DEAN ALTARAS, CCIM**  
 Direct: 425.974.4232  
 Cell: 425-417-7158  
 daltaras@mpiha.com

### CO-LISTED WITH

**BENJAMIN CHOTZEN**  
 GERARD, BEATTIE & KNAPP  
 Direct: 206-322-8940  
 Cell: 206-948-3208

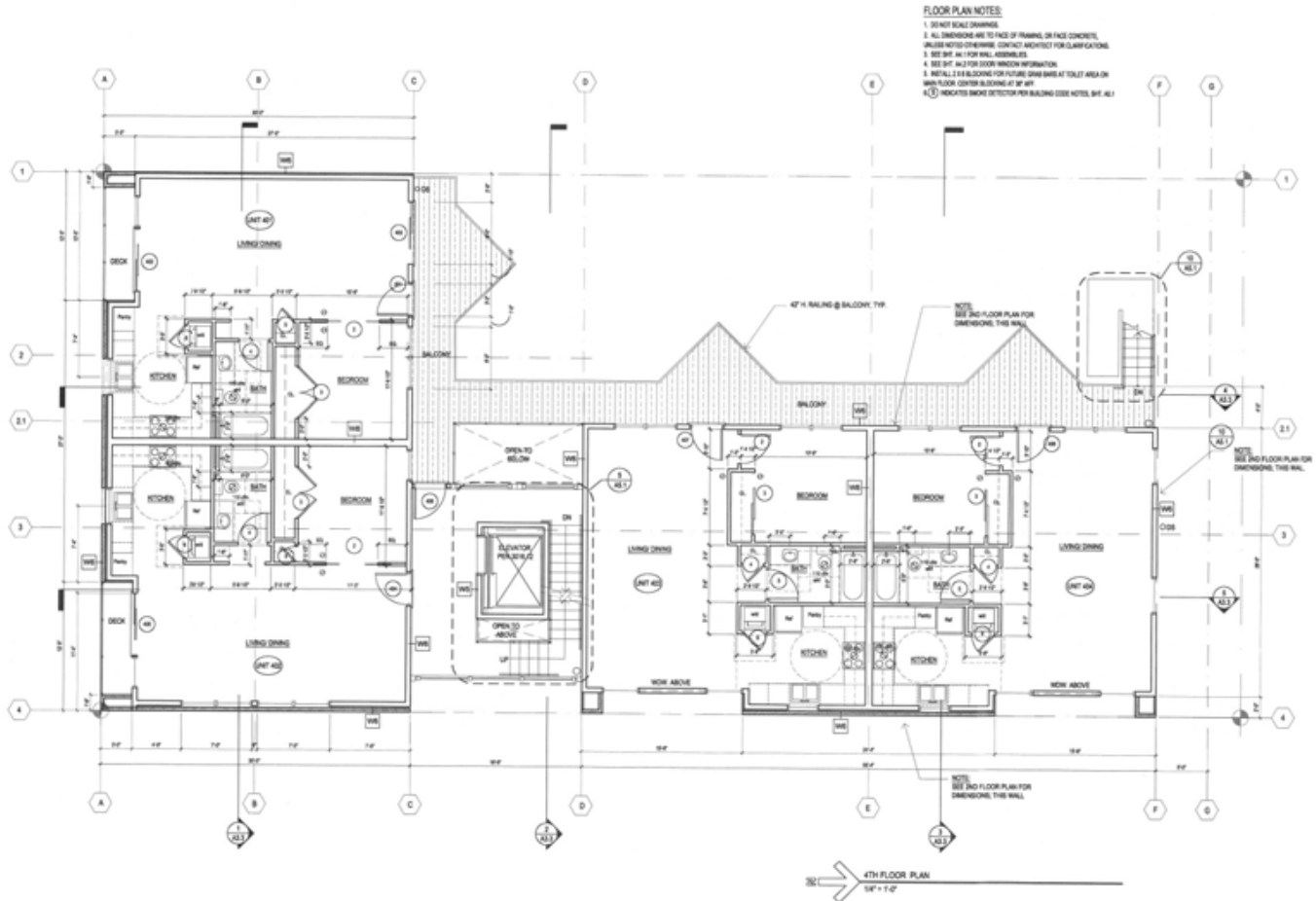
**MORRIS PIHA REAL ESTATE SERVICES**  
 14100 SE 36TH STREET, STE 200  
 BELLEVUE, WA 98006  
 425-643-8400  
[WWW.MPIHA.COM](http://WWW.MPIHA.COM)



# NE 45TH STREET DEVELOPMENT SITE

316 45TH STREET, SEATTLE, WA

## MUP PLANS—4TH FLOOR



Great Northern Land Company  
Seattle, WA 98105  
324 NE 45th Street

### FOR MORE INFORMATION CONTACT

**BILLY POLL, CCIM**  
Direct: 425.974.4232  
Cell: 206-853-8556  
bpoll@mpiha.com

**DEAN ALTARAS, CCIM**  
Direct: 425.974.4232  
Cell: 425-417-7158  
daltaras@mpiha.com

### CO-LISTED WITH

**BENJAMIN CHOTZEN**  
GERARD, BEATTIE & KNAPP  
Direct: 206-322-8940  
Cell: 206-948-3208

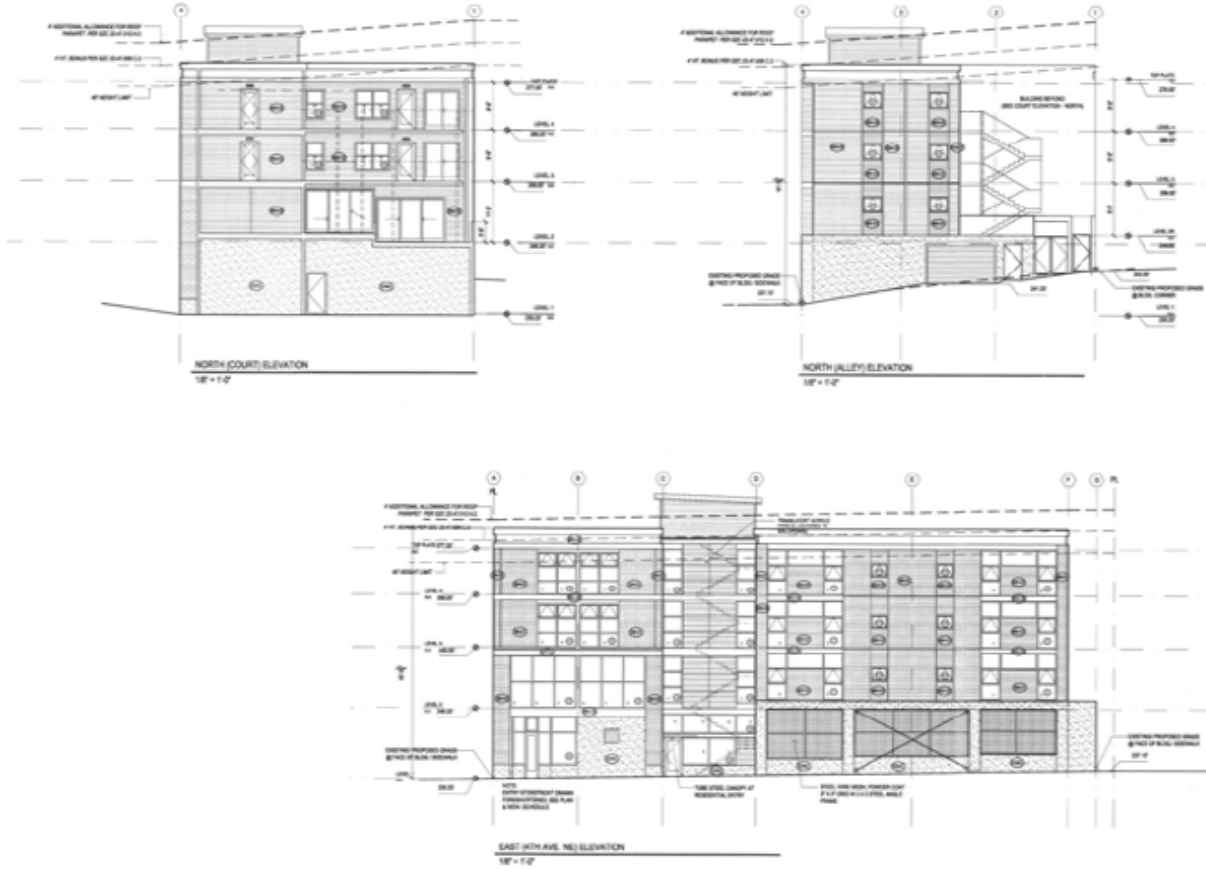
**MORRIS PIHA REAL ESTATE SERVICES**  
14100 SE 36TH STREET, STE 200  
BELLEVUE, WA 98006  
425-643-8400  
[WWW.MPIHA.COM](http://WWW.MPIHA.COM)



# NE 45TH STREET DEVELOPMENT SITE

316 45TH STREET, SEATTLE, WA

## MUP PLANS—NORTH & EAST ELEVATION



**Great Northern Land Company**  
Seattle, WA 98105  
304 NE 45th Street

REVISIONS

DATE: JUNE 8, 2017  
PHASE: BUILDING PERMIT SUBMITTAL  
DESCRIPTION: BUILDING ELEVATIONS  
**A3.1**

### FOR MORE INFORMATION CONTACT

**BILLY POLL, CCIM**  
Direct: 425.974.4232  
Cell: 206-853-8556  
bpoll@mpiha.com

**DEAN ALTARAS, CCIM**  
Direct: 425.974.4232  
Cell: 425-417-7158  
daltaras@mpiha.com

### CO-LISTED WITH

**BENJAMIN CHOTZEN**  
GERARD, BEATTIE & KNAPP  
Direct: 206-322-8940  
Cell: 206-948-3208

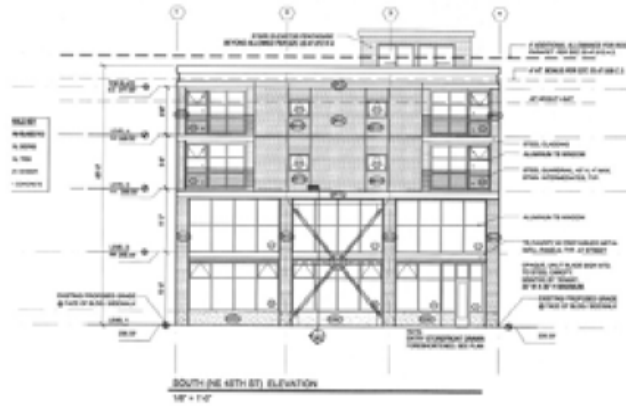
**MORRIS PIHA REAL ESTATE SERVICES**  
14100 SE 36TH STREET, STE 200  
BELLEVUE, WA 98006  
425-643-8400  
[WWW.MPIHA.COM](http://WWW.MPIHA.COM)



# NE 45TH STREET DEVELOPMENT SITE

316 45TH STREET, SEATTLE, WA

MUP PLANS—SOUTH & WEST ELEVATION



Great Northern Land Company  
324 NE 45th Street  
Seattle, WA 98115

NO.	REVISION	DATE

DATE: JUNE 8, 2011  
PHASE: BUILDING PERMIT SUBMITTAL

DESCRIPTION: BUILDING ELEVATIONS

**A3.2**

## FOR MORE INFORMATION CONTACT

**BILLY POLL, CCIM**  
Direct: 425.974.4232  
Cell: 206-853-8556  
bpoll@mpiha.com

**DEAN ALTARAS, CCIM**  
Direct: 425.974.4232  
Cell : 425-417-7158  
daltaras@mpiha.com

## CO-LISTED WITH

**BENJAMIN CHOTZEN**  
GERARD, BEATTIE & KNAPP  
Direct: 206-322-8940  
Cell : 206-948-3208

**MORRIS PIHA REAL ESTATE SERVICES**  
14100 SE 36TH STREET, STE 200  
BELLEVUE, WA 98006  
425-643-8400  
[WWW.MPIHA.COM](http://WWW.MPIHA.COM)



The information contained herein, while not guaranteed, has been secured from sources Morris Piha Real Estates Services believes to be reliable and is considered the most current and correct data available. Prospective purchaser (or lessee) should verify all such information on their own behalf or have information verified by their attorney, accountant or business advisor.